

Double Cylinder, Union Profile DZUN



Configuration

Housing in nickel-plated brass, reversible key made from nickel silver, housing in natural brass at no additional charge.

Included with the cylinder

3 reversible keys

Kaba gemini S, quattro S and quattro pluS: plastic clip in Kaba blue

Kaba penta: plastic clip in dark red

1 cylinder fastening screw M5 x 65mm

Available Systems

6 Kaba penta

7 Kaba quattro pluS

2 Kaba gemini S

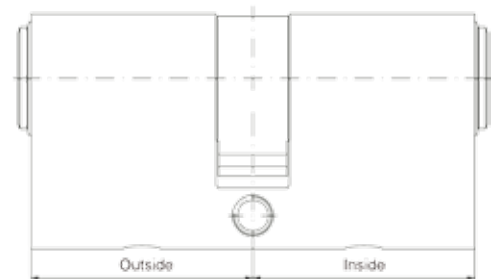
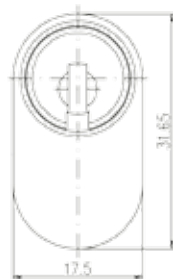
4 Kaba quattro S

5 Kaba experT²⁾

9 Kaba gemini T²⁾

3 Kaba quattro¹⁾

1 Kaba gemini¹⁾



Order code	Outside	Inside
*.DZUN.30+30 **	30	30
*.DZUN.30+35 **	30	35
*.DZUN.30+40 **	30	40
*.DZUN.100+100.**	100	100

Extensions in 5 mm increments.
All lengths 105 mm and greater per cylinder side are special lengths.

* System code number (1, 2, 3, 4, 5, 6, 7, 9)

** Surface Finishes

Natural nickel	NI
Standard/natural brass	MS
Standard antique brass	MSA
Polished brass	MP
Chemically nickel-plated	NIC
Standard chrome	CR
Polished chrome	CRP
Dull chrome	CRM
Light brown	BL
Medium brown	BM
Brown, dark/black	BD
Gold plated	GO

¹⁾ The systems Kaba gemini and Kaba quattro are offered for expansions only!

²⁾ The systems Kaba experT and Kaba gemini T are only sold to authorized dealers.

Thumbturn Cylinder, Union Profile DKZUN



Configuration

Housing in nickel-plated brass, reversible key made from nickel silver, housing in natural brass at no additional charge.

Mega knob only in brass, polished and nickel, natural.

D-line knob only in nickel, natural.

Included with the cylinder

3 reversible keys

Kaba gemini S, quattro S and quattro pluS: plastic clip in Kaba blue

Kaba penta: plastic clip in dark red

1 cylinder fastening screw M5 x 65mm

Available Systems

6 Kaba penta

7 Kaba quattro pluS

2 Kaba gemini S

4 Kaba quattro S

5 Kaba experT²⁾

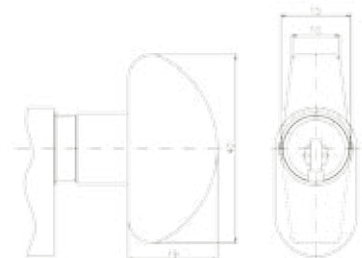
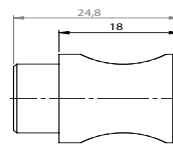
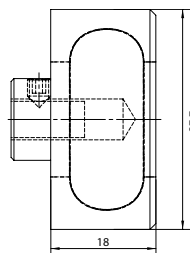
9 Kaba gemini T²⁾

3 Kaba quattro¹⁾

1 Kaba gemini¹⁾



D-line knob



Mega knob

Order code with standard knob

	Outside	Inside
*.DKZUN.30+30 **	30	30
*.DKZUN.30+35 **	30	35
*.DKZUN.30+40 **	30	40
*.DKZUN.100+100.**	100	100

Order code with mega knob

*.DKZUN30+40**.*MEGA.NI or MP

Order code with D-line knob

*.DKZUN30+40**.*D-LINE STD

Extensions in 5 mm increments.

All lengths 105mm and greater per cylinder side are special lengths.

* System code number (1, 2, 3, 4, 5, 6, 7, 9)

** Surface Finishes

Natural nickel	NI
Standard/natural brass	MS
Standard antique brass	MSA
Polished brass	MP
Chemically nickel-plated	NIC
Standard chrome	CR
Polished chrome	CRP
Dull chrome	CRM
Light brown	BL
Medium brown	BM
Brown, dark/black	BD
Gold plated	GO

¹⁾ The systems Kaba gemini and Kaba quattro are offered for expansions only!

²⁾ The systems Kaba experT and Kaba gemini T are only sold to authorized dealers.

Single Cylinder, Union Profile HZUN



Configuration

Housing in nickel-plated brass, reversible key made from nickel silver, housing in natural brass at no additional charge.

Included with the cylinder

3 reversible keys

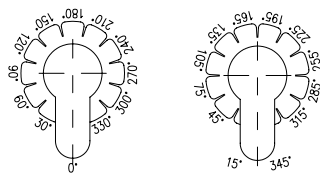
Kaba gemini S, quattro S and quattro pluS: plastic clip in Kaba blue

Kaba penta: plastic clip in dark red

1 cylinder fastening screw M5 x 65 mm

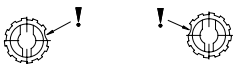
Cam: standard 2x12 adjustable setting

(in 15° increments, cam setting 0 is not permitted as per RAL standard):



Standard setting: 30° to the right with marking point viewed from front side of cylinder.

- 1) Unscrew cover on rear side of cylinder using a coin or screwdriver.
- 2) Remove coupling and cam hub.
- 3) Align cylinder on the template and turn cam to the desired position.
- 4) Slide cam hub into the housing as per the diagram.
- 5) Insert coupling into the cam hub.
- 6) Screw cover back on until it closes even with the housing.



Available Systems

6 Kaba penta

7 Kaba quattro pluS

2 Kaba gemini S

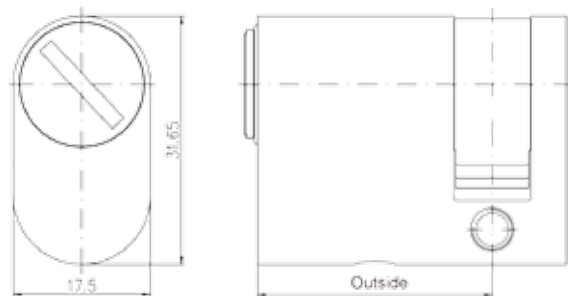
4 Kaba quattro S

5 Kaba expert²⁾

9 Kaba gemini T²⁾

3 Kaba quattro¹⁾

1 Kaba gemini¹⁾



Order Code	Outside
*.HZUN30**	30
*.HZUN35**	35
*.HZUN40**	40
*.HZUN100**	100

Extensions in 5 mm increments.
All lengths 105 mm and greater per cylinder side are special lengths.

* System code number (1, 2, 3, 4, 5, 6, 7, 9)

** Surface Finishes

Natural nickel	NI
Standard/natural brass	MS
Standard antique brass	MSA
Polished brass	MP
Chemically nickel-plated	NIC
Standard chrome	CR
Polished chrome	CRP
Dull chrome	CRM
Light brown	BL
Medium brown	BM
Brown, dark/black	BD
Gold plated	GO

¹⁾ The systems Kaba gemini and Kaba quattro are offered for expansions only!

²⁾ The systems Kaba expert and Kaba gemini T are only sold to authorized dealers.