

# Double Cylinder, Swiss Round Profile 22 mm **KABA®** DZCH

## Configuration

Housing in nickel-plated brass, reversible key made from nickel silver, housing in natural brass at no additional charge.

Emergency master key function is standard.

(Please order emergency master keys separately, see chapter "Special configurations and functions").

Also available as a short cylinder (starting from 27 + 37 mm)

## Included with the cylinder

3 reversible keys

Kaba gemini S, quattro S and quattro pluS: plastic clip in Kaba blue

Kaba penta: plastic clip in dark red

1 cylinder fastening screw M5 x 65 mm

## Available Systems

6 Kaba penta

7 Kaba quattro pluS

2 Kaba gemini S

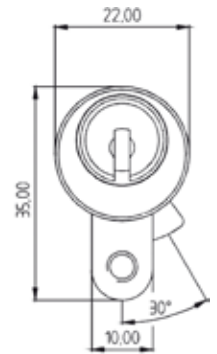
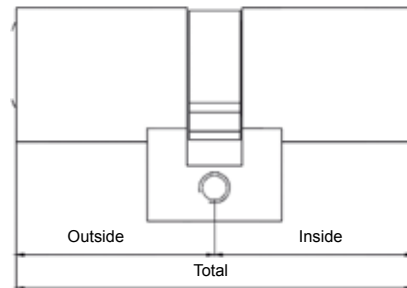
4 Kaba quattro S

5 Kaba experT<sup>2)</sup>

9 Kaba gemini T<sup>2)</sup>

3 Kaba quattro<sup>1)</sup>

1 Kaba gemini<sup>1)</sup>



Order Code	Outside	Inside
*.DZCH.32+32 **	32	32
*.DZCH.32+37 **	32	37
*.DZCH.32+42 **	32	42
*.DZCH.102+102**	102	102

Extensions in 5 mm increments.

Only for Kaba 8 starting at a 52 mm length, cylinder side

only in 10 mm increments.

All lengths 102 mm and greater per cylinder side are

\* System code (1, 2, 3, 4, 5, 6, 7, 8, 9)

## \*\* Surface Finishes

Natural nickel	NI
Standard/natural brass	MS
Standard antique brass	MSA
Polished brass	MP
Chemically nickel-plated	NIC
Standard chrome	CR
Polished chrome	CRP
Dull chrome	CRM
Light brown	BL
Medium brown	BM
Brown, dark/black	BD
Gold plated	GO

<sup>1)</sup> The systems Kaba gemini and Kaba quattro are offered for expansions only!

<sup>2)</sup> The systems Kaba experT and Kaba gemini T are only sold to authorized dealers.

# Thumbturn Cylinder, Swiss Round Profile 22 mm DKZCH



## Configuration

Housing in nickel-plated brass, reversible key made from nickel silver, housing in natural brass at no additional charge.

Also available as short cylinder (starting from 27 + 37 mm)

Mega knob only in brass, polished and nickel, natural.

D-line knob only in nickel, natural.

## Included with the cylinder

3 reversible keys

Kaba gemini S, quattro S and quattro pluS: plastic clip in Kaba blue

Kaba penta: plastic clip in dark red

1 cylinder fastening screw M5 x 65 mm

## Available Systems

6 Kaba penta

7 Kaba quattro pluS

2 Kaba gemini S

4 Kaba quattro S

5 Kaba expert<sup>2)</sup>

9 Kaba gemini T<sup>2)</sup>

3 Kaba quattro<sup>1)</sup>

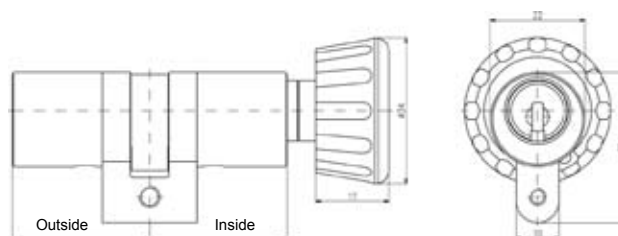
1 Kaba gemini<sup>1)</sup>



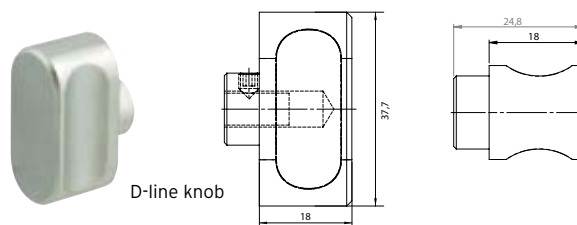
Standard knob



Mega knob



Outside = key side  
Inside = knob side



D-line knob

\* System code (1, 2, 3, 4, 5, 6, 7, 8, 9)

## Order code with standard knob

	Outside	Inside
*.DKZ.32+32 **	32	32
*.DKZ.32+37 **	32	37
*.DKZ.32+42 **	32	42
*.DKZ.102+102**	102	102

## Order code with mega knob

\*.DKZ32+42\*\*.\*MEGA.NI or MP

## Order code with D-line knob

\*.DKZ32+42\*\*.\*D-LINE STD

Extensions in 5 mm increments.

All lengths 105 mm and greater per cylinder side are special lengths.

## \*\* Surface Finishes

Natural nickel	NI
Standard/natural brass	MS
Standard antique brass	MSA
Polished brass	MP
Chemically nickel-plated	NIC
Standard chrome	CR
Polished chrome	CRP
Dull chrome	CRM
Light brown	BL
Medium brown	BM
Brown, dark/black	BD
Gold plated	GO

<sup>1)</sup> The systems Kaba gemini and Kaba quattro are offered for expansions only!

<sup>2)</sup> The systems Kaba expert and Kaba gemini T are only sold to authorized dealers.

# Single Cylinder, Round Profile 22 mm HZCH

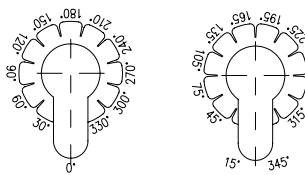


## Configuration

Housing in nickel-plated brass, reversible key made from nickel silver, housing in natural brass at no additional charge.  
Also available as a short cylinder (\*.HZ27\*\*)

## Included with the cylinder

3 reversible keys  
Kaba gemini S, quattro S and quattro pluS: plastic clip in Kaba blue  
Kaba penta: plastic clip in dark red  
1 cylinder fastening screw M5 x 65 mm  
Cam: standard 2x12 adjustable settings  
(in 15° increments, cam setting 0 is not permitted as per RAL standard):



Standard setting: 30° to the right with marking point viewed from front side of cylinder.

- 1) Unscrew cover on rear side of cylinder using a coin or screwdriver.
- 2) Remove coupling and cam hub.
- 3) Align cylinder on the template and turn cam to the desired position.
- 4) Slide cam hub into the housing as per the diagram.
- 5) Insert coupling into the cam hub.
- 6) Screw cover back on until it closes even with the housing.



## Available Systems

6 Kaba penta

7 Kaba quattro pluS

2 Kaba gemini S

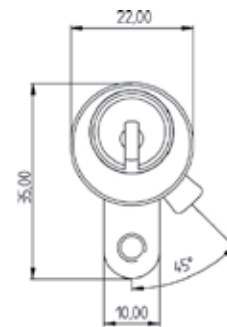
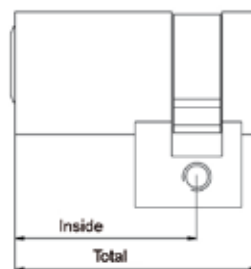
4 Kaba quattro S

5 Kaba experT<sup>2)</sup>

9 Kaba gemini T<sup>2)</sup>

3 Kaba quattro<sup>1)</sup>

1 Kaba gemini<sup>1)</sup>



Order Code	Outside
*.HZCH32 **	32
*.HZCH37 **	37
	I
*.HZCH102 **	102

Extensions in 5 mm increments.  
Only for Kaba 8 starting at a 52 mm length, cylinder side only in 10 mm increments.  
All lengths 102 mm and greater per cylinder side are special lengths.

\* System code (1, 2, 3, 4, 5, 6, 7, 8, 9)

\*\* Surface Finishes

Natural nickel	NI
Standard/natural brass	MS
Standard antique brass	MSA
Polished brass	MP
Chemically nickel-plated	NIC
Standard chrome	CR
Polished chrome	CRP
Dull chrome	CRM
Light brown	BL
Medium brown	BM
Brown, dark/black	BD
Gold plated	GO

<sup>1)</sup> The systems Kaba gemini and Kaba quattro are offered for expansions only!

<sup>2)</sup> The systems Kaba experT and Kaba gemini T are only sold to authorized dealers.